

BERKELEY PINES SKILLED NURSING CENTER

Facility No. 21225

02/28/17

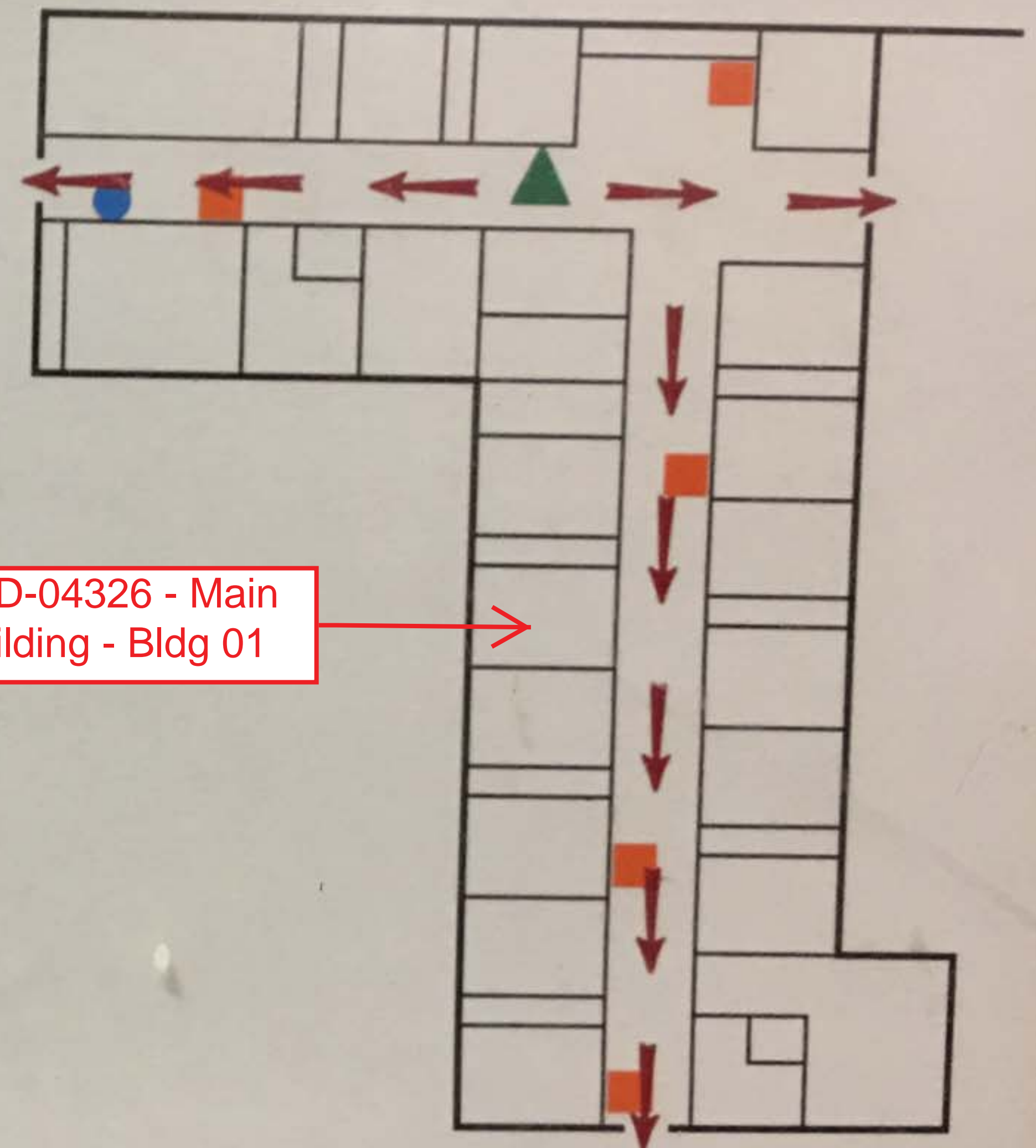
FIRE EVACUATION PLAN

▲ YOU ARE HERE

In the unlikely event of a fire, please pull fire alarm and proceed to the nearest fire exit and exit the building or proceed to the nearest stairwell and await assistance, if necessary.

- Pull Box
- Fire Extinguisher

Fire Dept. Phone # **911**



BLD-04326 - Main Building - Bldg 01

In case of fire, use stairways.
Do NOT use elevator.