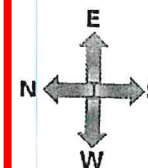


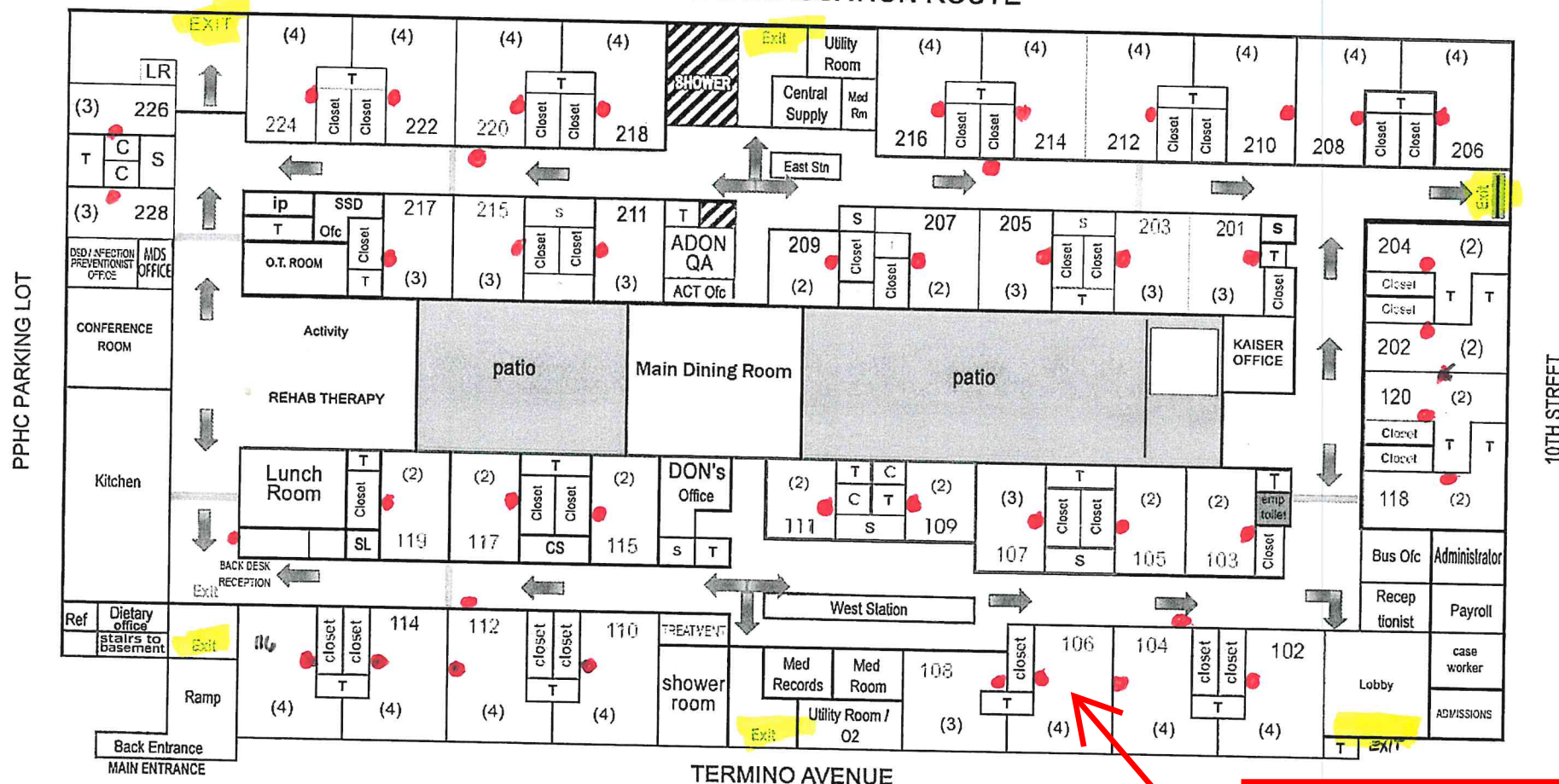


Pacific Palms Healthcare

Facility No. 22254 4/4/2024



FLOOR PLAN & EVACUATION ROUTE



SQUARE FOOTAGE:

- > 2 BED / ROOM = 220 SQ. FT.
- > 3 BED / ROOM = 282 SQ. FT.
- > 4 BED / ROOM = 299 SQ. FT.

LEGEND:



East Station Beds

- 1.) 4 beds in a room (10 rooms) = 40
- 3 beds in a room (8 rooms) = 24
- 2 beds in a room (2 rooms) = 4
- total beds = 68

West Station Beds

- 1.) 4 beds in a room (7 rooms) = 28
- 3 beds in a room (3 rooms) = 6
- 2 beds in a room (11 rooms) = 22
- total beds = 56

GRAND TOTAL = 124 BEDS

BLD-04673 - Main Building - Bldg 01

● - RED PLUGS

UPDATED 12/7/2022

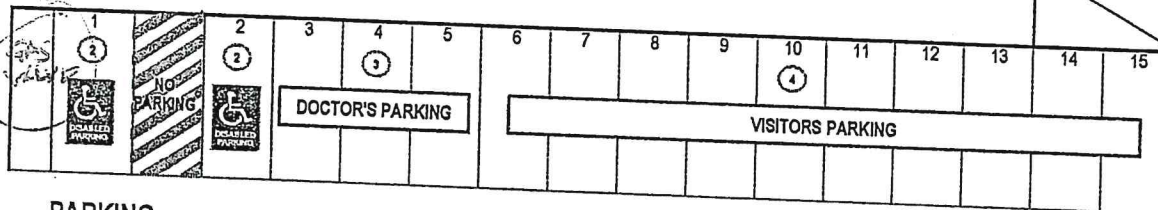


PACIFIC PALMS HEALTHCARE
1020 Termino Avenue, Long Beach, CA 90804
Tel# (562) 433-6791 / Fax# (562) 433-9801

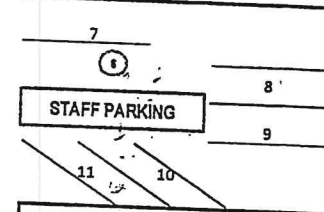
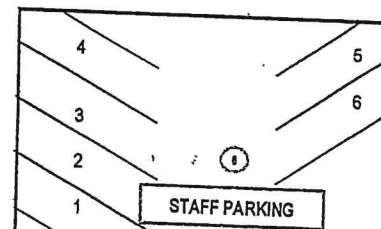
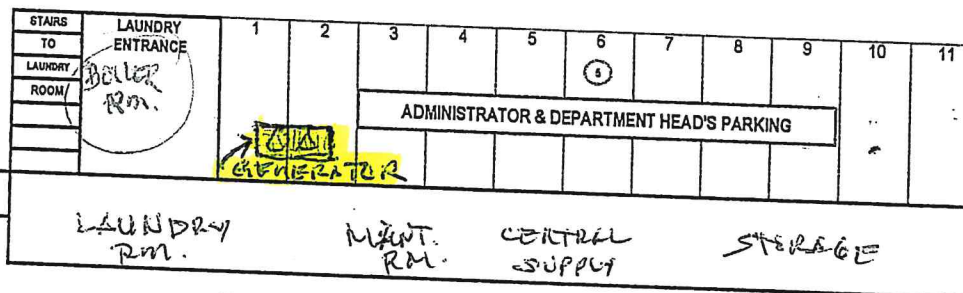
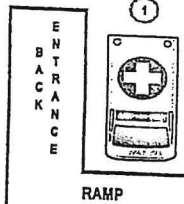
PARKING LOT PLAN

MAYFIELD STREET

TERMINO AVENUE



PARKING ENTRANCE



LEGEND:

- ① AMBULANCE PARKING
- ② DISABLED PARKING
- ③ DOCTOR'S PARKING
- ④ VISITOR'S PARKING
- ⑤ ADMINISTRATOR & DEPT. HEAD'S PARKING
- ⑥ STAFF PARKING

NUMBER OF PARKING SPACES:

-	1
-	2
-	3
-	10
-	11
-	11
TOTAL NUMBER OF PARKING SPACES:	<u>38</u>

NOTE:

ON TERMINO AVENUE, 10TH STREET &
MAYFIELD STREET
PARKING ALLOWED ON EITHER SIDE

10TH STREET