

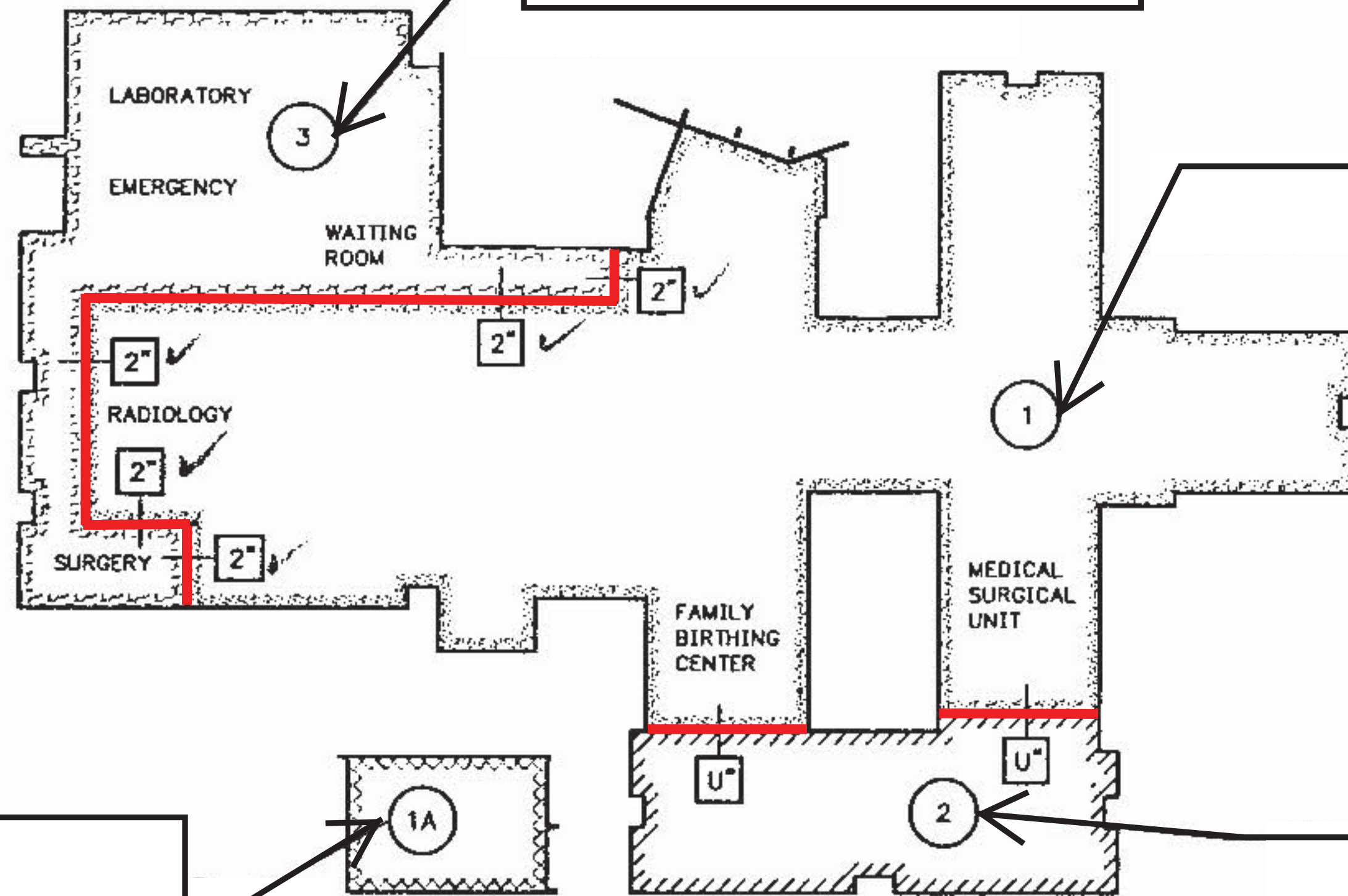
**Adventist Health Selma**  
**Facility No. 10160** 11/15/17

ROSE AVENUE

COUNTRY CLUB LANE

**BLD-00510 -  
Emergency / Laboratory  
- Bldg 03**

**BLD-00507 - Medical /  
Surgical / Birthing -  
Bldg 01**



**BLD-00508 -  
Maintenance  
Building - Bldg 01A**

**BLD-00509 - Nursing  
Wing - Bldg 02**

**BLD-00512 - Warehouse  
- Bldg 05**

**BLD-00511 - Multi-  
Use Facility - Bldg 04**

EVERGREEN STREET

