



Introduction to the Claims Data Manager (CDM)

April 7, 2022

Welcome & Introductions

- **Dionne Evans-Dean**, *HCAI Cost Transparency Section Manager*
- **Anastasia Andryukova**, *HCAI HPD Analyst*
- **Olga Dobrynina**, *HCAI HPD Analyst*
- **Greg Dawson**, *HCAI HPD Project Manager*
- **Gina Robertson**, *Onpoint HPD Data Submitter Liaison*
- **Carolyn Conrad**, *Onpoint HPD Project Manager*

Agenda

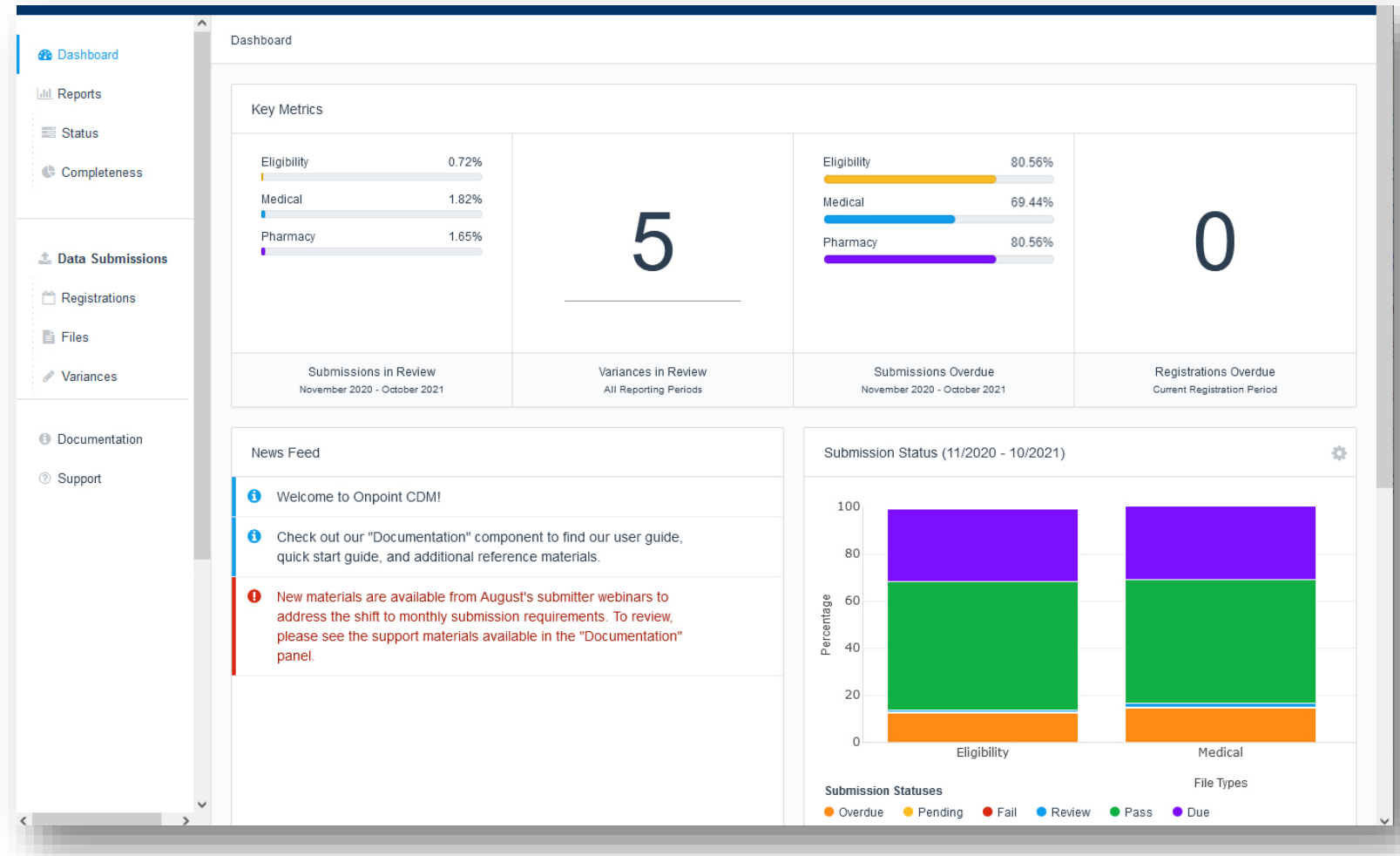
- Overview of the Claims Data Manager (CDM)
- CDM portal demonstration
 - Login
 - Dashboard review
 - File upload
 - Submission status tracking
 - Variance requests
 - Contact management
 - Documentation and user support
- Questions?



Overview of the Claims Data Manager (CDM)

Using the Claims Data Manager

- Access provided to registered submitters
- Submit data
- Review quality and completeness
- Request variances
- Keep record of submission schedule
- Update your contacts
- Get 24x7 support / documentation



Prerequisites for Portal Access & Submitting Files

- Completed and approved submitter registration(s)
- Plan and submitter codes received and incorporated into submissions
- Successful sign-in to the claims data manager (CDM)
- Public PGP key sent to Onpoint for data encryption
- If submitter will be sending data via SFTP:
 - Public SSH key sent to Onpoint for SFTP connectivity
 - Confirmation from Onpoint of SFTP account creation



CDM Portal Demonstration



Questions?

Technical questions?

hpd-support@onpointhealthdata.org

Regulatory questions?

hpd@hcai.ca.gov

Thank you.



Reliable data. Informed decisions. Strategic advantage.

75 Washington Avenue
Suite 1E
Portland, ME 04101

207 623-2555

www.OnpointHealthData.org