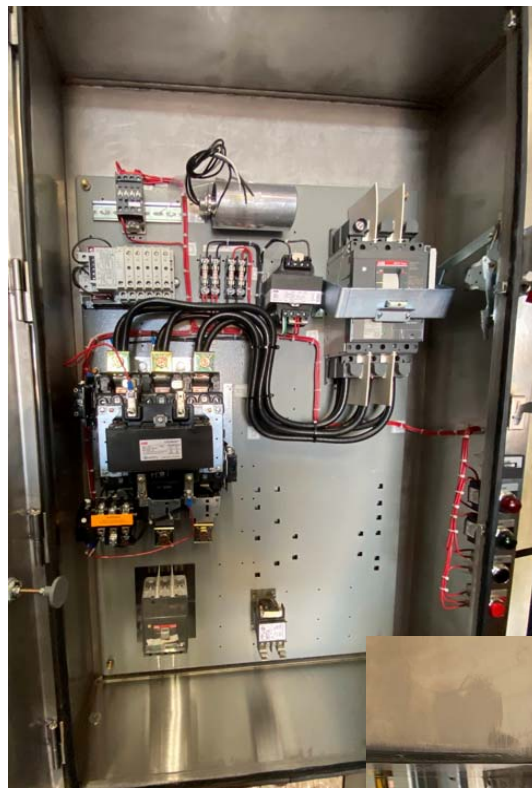


UUT_y-13

**UNIT UNDER TEST (UUT)
SUMMARY SHEET**



Mounting Details: Wall mounted with (4) 3/8" diameter grade 5 bolts



| | |
|---|--|
| Manufacturer: ABB, Inc. | Test Location: ETL (Dallas, TX) |
| Product Line: Wall Mounted Control Panel | Report Number: 16380 |
| Identification Number: GPCEW5-4X | UUT No. in Test Report: UUT-13 |

UUT Function: Enclosed Control Panel

UUT Description: The unit under test is a wall mounted NEMA Type 4X enclosed control panel.

UUT Component Description: NEMA 4X, size 5 stainless steel enclosure with XT2 125A and XT5 600A circuit breakers, CR305 270A contactor and CR324 relay, 1SVR7 voltage relay, 9T58K 0.25kVA transformer, NECO Hammond transformer, CR460 lightning contactor, and CA603 surge capacitor.

UUT PROPERTIES

| Weight (lb) | Dimensions (inches) | | | Natural Frequency (Hz) | | |
|-------------|---------------------|-----------------|------------------|------------------------|----|----|
| | Enclosure Width | Enclosure Depth | Enclosure Height | FB | SS | V |
| 306 | 31.0" | 13.0" | 54.0" | NA | NA | NA |

SEISMIC TEST PARAMETERS

| Test Criteria | S _{DS} (g) | z / h | I _p | A _{FLX-H} | A _{RIG-H} | A _{FLX-V} | A _{RIG-V} |
|-------------------------|---------------------|-------|----------------|--------------------|--------------------|--------------------|--------------------|
| CBC 2019 / ICC-ES-AC156 | 2.00 | 1.00 | 1.50 | 3.20 | 2.40 | | |
| | 2.50 | 0.00 | 1.50 | | | 1.67 | 0.67 |

Note: The unit was full of contents during testing and remained functional before and after the ICC-ES AC156 test. The unit maintained structural integrity during and after the ICC-ES AC156 Test.