



**ONPOINT**  
Health Data

Reliable data.  
Informed decisions.  
Strategic advantage.

# Overview of Onpoint CDM (Claims Data Manager) & Data Submission Best Practices

June 11, 2025

# Agenda

- Overview of Onpoint CDM (Claims Data Manager)
- Onpoint CDM demonstration
- Review of data submission best practices
- Questions?

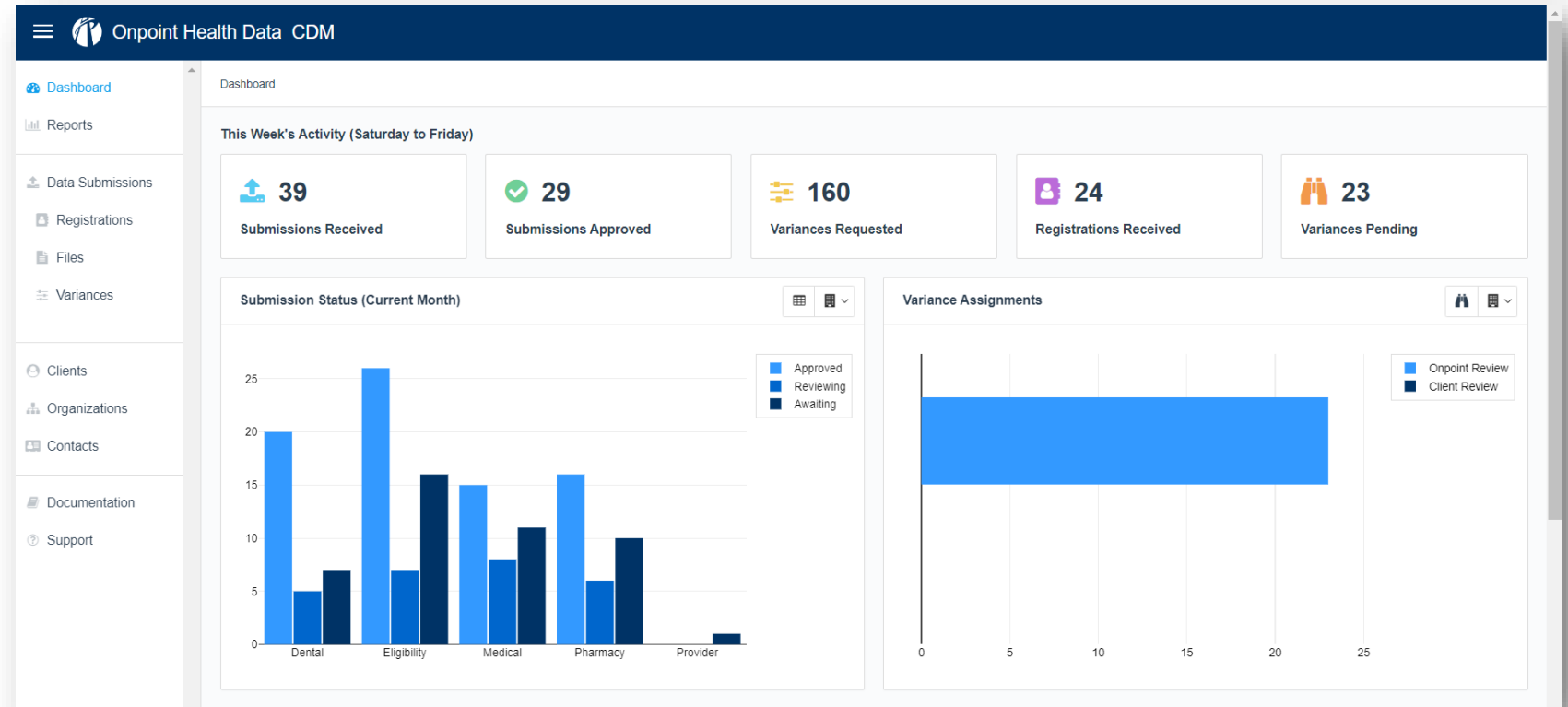


# Overview of Onpoint CDM (Claims Data Manager)

Nicole Jakubowski, *Onpoint Operations Analyst*

# Using Onpoint CDM – Functionality & Features

- Access provided to registered submitters
- Submit data
- Review quality and completeness
- Request variances
- Keep record of submission schedule
- Update your contacts
- Get 24x7 support / documentation



# Gaining Onpoint CDM Access & Submitting Files

- To gain access to Onpoint CDM and submit files, the following items are required
  - Completed and approved submitter registration(s)
  - Submitter code(s) received and incorporated into submissions
  - Successful sign-in to Onpoint CDM
  - Public PGP key sent to Onpoint for data encryption
  - If submitter will be sending data via SFTP:
    - » Public SSH key sent to Onpoint for SFTP connectivity
    - » Confirmation from Onpoint of SFTP account creation



# Onpoint CDM Demonstration

Nicole Jakubowski, *Onpoint Operations Analyst*



# Data Submission Best Practices

Nicole Jakubowski, *Onpoint Operations Analyst*

# 1. Test PGP Encryption Early

- Reminder: Test files are due September 1, 2025
- Test early to avoid file transfer obstacles later in the implementation

## 4.2 Testing

After registering under Section 4.1 of this DSG, registered submitters must:

- By September 1, 2025, submit at least one test file through the data portal for each historical NCP Data File type they will submit.
  - For example, if a registered submitter will submit historical Annual Payment Files and historical Capitation Files, it must submit at least one test Annual Payments File and one test Capitation File by September 1, 2025.



## 2. Submit Production Data for “Test” Submissions

- After submitters confirm successful PGP encryption, Onpoint recommends submitters use real, complete production data to verify submission mappings, which provide the following benefits:
  - Variances can be applied only to real, complete production data (not test environment or dummy data)
  - Submitters will gain full understanding of how their data set performs against Onpoint CDM’s automated data quality validations
  - Once a file with real, complete production data passes Onpoint CDM’s data quality validations, that file can be incorporated into the larger historical data set required by the submitter during implementation

### 3. Monitor Submission Progress

- Track your submission progress...
  - In Onpoint CDM
  - Through review of automated emails detailing submission status
- Review your data's formatting, completeness, and validation results
- Remediate mapping issues
- Reach out to [hpd-support@onpointhealthdata.org](mailto:hpd-support@onpointhealthdata.org) for help reviewing your file

## 4. Consult Additional NCP Resources

- [NCP Data Layout™ Version 1.0](#)
- [HPD Submitter Webpage](#)
  - Submitter Group presentation and training materials
  - HPD Data Submission Guide Version 3.0
  - HPD Reporting Manual Version 3.0 (expected June 2025)
- [HCAI Primary Care definition](#)
- HCAI Behavioral Health definition (expected August 2025)
- NCP Data Layout™ – Submission Scenarios (expected June 2025)

## 5. Reach Out for Support ... We're Here to Help!

- For questions on validation failures
- For questions on data element specifications
- For questions on Onpoint CDM functionality



# Questions?

**Technical questions:**

[hpd-support@onpointhealthdata.org](mailto:hpd-support@onpointhealthdata.org)

**Regulatory questions:**

[hpd@hcai.ca.gov](mailto:hpd@hcai.ca.gov)

# Implementation & Training Timeline – Quarter 1

Date		Description
April 1, 2025	✓	Plan registration opens for NCP file types
April 10, 2025	✓	Submitter Group Meeting – NCP Registration and Data Collection Overview
April 30, 2025	✓	Webinar: Overview of NCP Data Collection
May 1, 2025	✓	Submitter registration opens for NCP file types
May 14, 2025	✓	Webinar: Introduction to SFTP & PGP File Encryption
May 29, 2025	✓	Webinar: Overview of NCP File Formats & Validation
June 11, 2025	📍	Webinar: Overview of CDM & Submission Best Practices

# Implementation & Training Timeline – Quarter 2

Date	Description
July 1, 2025	Onpoint CDM configured to accept NCP test files
September 1, 2025	Deadline for submitting at least one test file for each historical NCP data file type
June 30, 2026	Deadline for successfully completing testing for each historical NCP data file type
July 31, 2026	Historical data (June 29, 2017 – December 31, 2024) due for annual payments and pharmacy rebates
September 1, 2026	Historical data (June 29, 2017 – July 31, 2026) due for capitation file
September 30, 2026	Initiation of ongoing annual payments and pharmacy rebates, starting with CY2025 reporting
October 1, 2026	Initiation of ongoing monthly capitation file, starting with August 2026 reporting

# Thank you.



Reliable data. Informed decisions. Strategic advantage.

12 Mountfort Street  
Suite 201  
Portland, ME 04101

207 623-2555

[www.OnpointHealthData.org](http://www.OnpointHealthData.org)